

Mentype[®] Argus X-8

For fast und reliable profiling of X-chromosomal STR markers

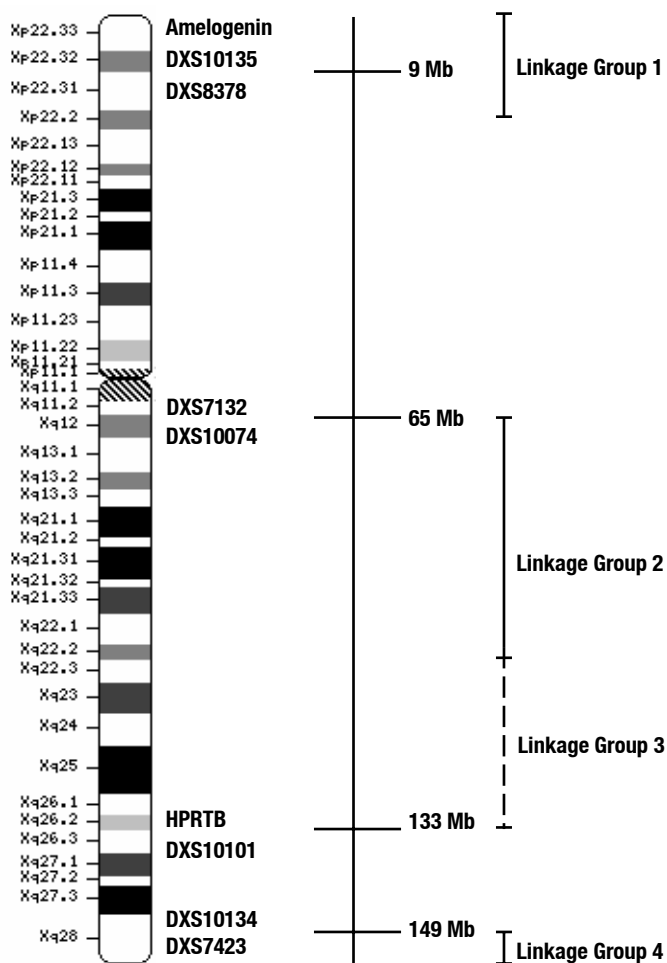


Mentype[®] **Argus X-8** was developed for multiplex amplification of eight X-chromosomal STR loci plus Amelogenin. These gonosomal STR markers are especially helpful in paternity testing and kinship analysis like mother-son and father-daughter kinship or kinship testing of putative sisters including deficiency cases. Furthermore, usage of gonosomal STRs in analyses of forensic DNA stains is strongly rising (i. e. female traces on a male background). With Mentype[®] **Argus X-8** the following markers are amplified simultaneously:

Bio type[®]



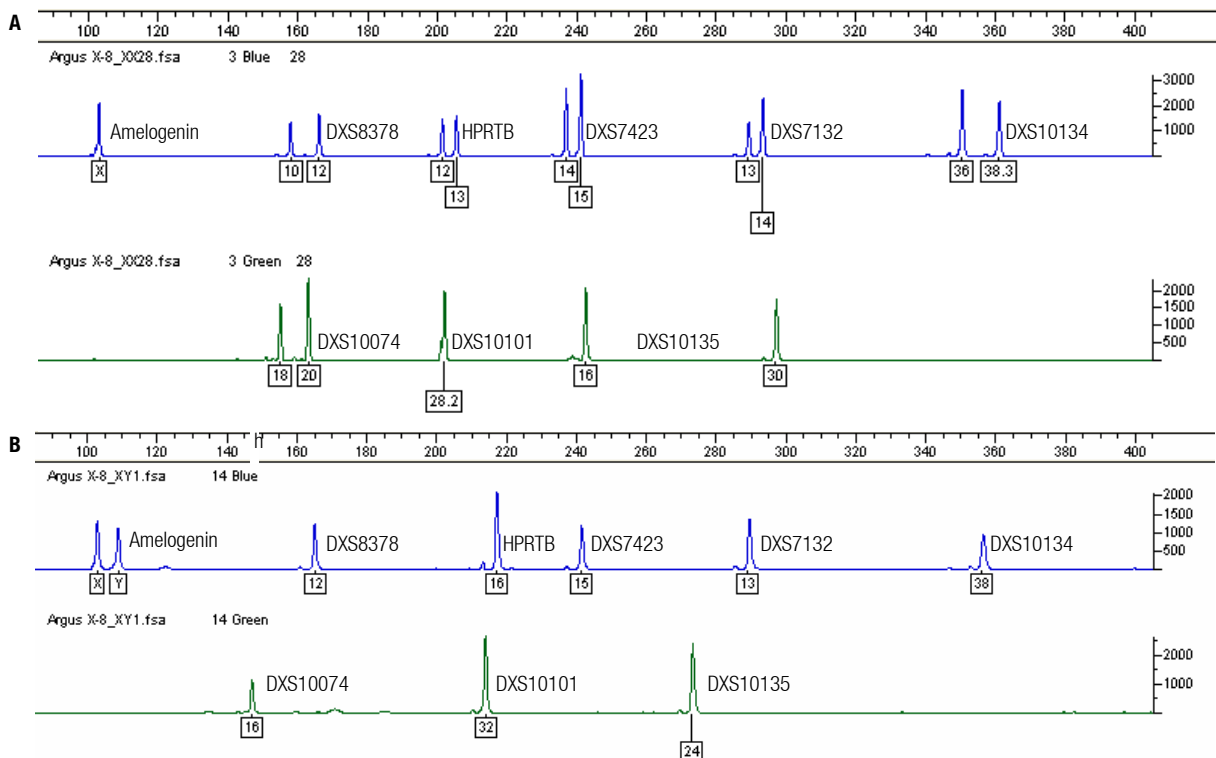
6-FAM: Amelogenin DXS8378 HPRTB DXS7423 DXS7132 DXS10134
HEX: DXS10074 DXS10101 DXS10135



Ideogram of the X-chromosome for description of the Mentype[®] **Argus X-8** STR loci. Distances from the p-telomere are shown in Mb (<http://www.ncbi.nlm.nih.gov/genome/guide/human> from 10/2005).

Mentype[®] Argus X-8

Maximum sensitivity of X-chromosomal STR markers



Electropherograms of PCR products using the Mentype[®] Argus X-8 analysed on an ABI PRISM[®] 310 Genetic Analyzer with Genotyper[®] Software. **A.** Female control DNA XX28 (200 pg). **B.** Male control DNA XY1 (100pg)

Technical specification

Detection limit: 100 pg genomic DNA
 Optimal amount of template DNA per reaction: 0.1-1.0 ng
 Volume per PCR-reaction: 25 µL
 Fluorescence labels: 6-FAM, HEX, ROX

Use with

ABI PRISM[®] 310 Genetic Analyzer
 ABI PRISM[®] 3100-Avant/3100 Genetic Analyzer
 ABI PRISM[®] 3130/3130xl Genetic Analyzer
 ABI PRISM[®] 3730 DNA Analyzer

Ordering information

Product	Content	Cat. No.
Mentype [®] Argus X-8	25 reactions	43-09110-0025
Mentype [®] Argus X-8	100 reactions	43-09110-0100
Mentype [®] Argus X-8	400 reactions	43-09110-0400