

# Mentype<sup>®</sup> Argus Y-MH<sup>QS</sup>

For fast und reliable profiling of Y-chromosomal STR markers

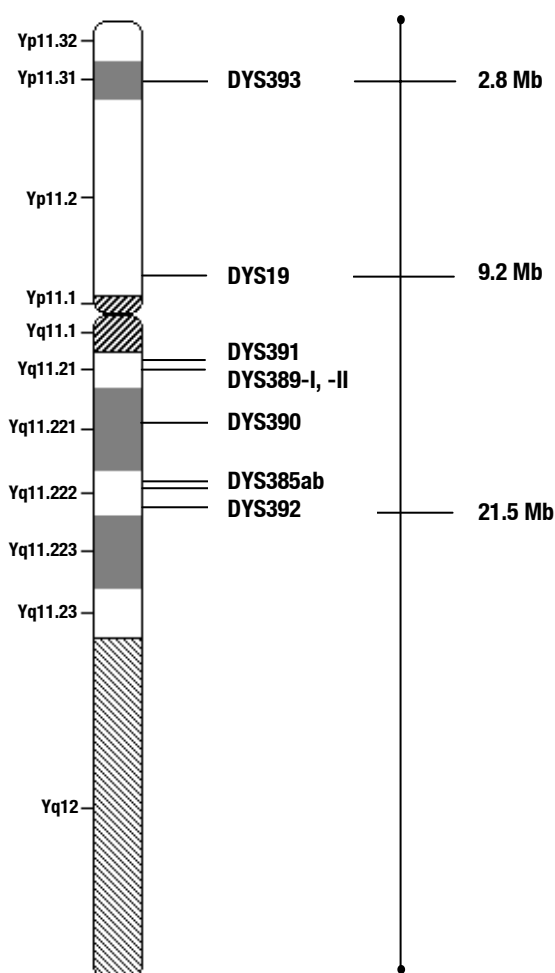


Mentype<sup>®</sup> **Argus Y-MH<sup>QS</sup>** was developed for multiplex amplification of the nine Y-chromosomal STR loci from the **minimal haplotype (MH)** standard. The test kit was developed specifically for fast and reliable generation of male DNA profiles from mixtures of male and female DNA up to a ratio of 1:6000 so that separation of sperm from female cells or differential lysis is not required. As special feature the kit contains the internal PCR control Mentype<sup>®</sup> **Quality Sensor (QS)** which provides helpful information on the efficiency of the PCR reaction and on the presence of PCR inhibitors. The following markers are amplified simultaneously:

Bio type<sup>®</sup>



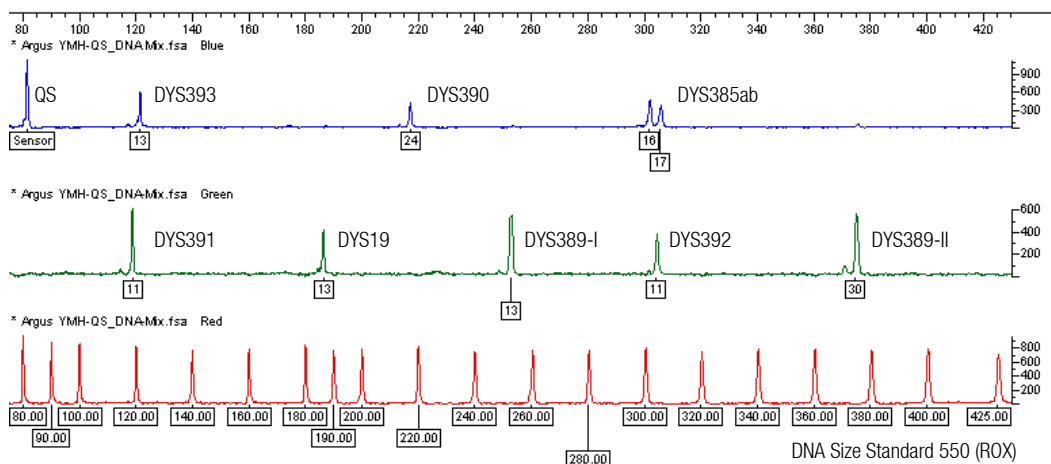
<b>6-FAM:</b>	<b>DYS393</b>	<b>DYS390</b>	<b>DYS385ab</b>		
<b>HEX:</b>	<b>DYS391</b>	<b>DYS19</b>	<b>DYS389-I</b>	<b>DYS392</b>	<b>DYS389-II</b>



Ideogram of the Y-chromosome for description of the Mentype<sup>®</sup> **Argus Y-MH<sup>QS</sup>** STR loci. The positions of the STR loci from the p-Telomer are shown in Mb (<http://www.ncbi.nlm.nih.gov/genome/guide/human> from 01/2004).

# Mentype® Argus Y-MH<sup>QS</sup>

## Maximum sensitivity of selected Y-chromosomal STR markers



Electropherogram of PCR products using the Mentype® Argus Y-MH<sup>QS</sup> analysed on an ABI PRISM® 310 Genetic Analyzer with Genotyper® Software. Use of 100 pg male Control DNA XY1 mixed with 100 ng female Control DNA XX64. The Mentype® Quality Sensor fragment signal is shown at 81 bp

## Components and amounts for 100 reactions

Nuclease-free water	3.0 mL
Reaction mix B	500 µL
Primer mix	250 µL
Control DNA XY1	10 µL
Control DNA XX	10 µL
DNA Size Standard (ROX)	50 µL
Allelic ladder	10 µL
Biotype® template files (Genotyper®/GeneMapper™ ID) CD-ROM	

## Technical specification

Detection limit: 100 pg genomic DNA  
 Optimal amount of template DNA per reaction: 0.1-1.0 ng  
 Volume per PCR-reaction: 25 µL  
 Fluorescence labels: 6-FAM, HEX, ROX

## Use with

ABI PRISM® 310 Genetic Analyzer  
 ABI PRISM® 3100-Avant//3100 Genetic Analyzer  
 ABI PRISM® 3130/3130xl Genetic Analyzer  
 ABI PRISM® 3730 DNA Analyzer

## Ordering information

Product	Content	Cat. No.
Mentype® Argus Y-MH <sup>QS</sup>	25 reactions	42-09112-0025
Mentype® Argus Y-MH <sup>QS</sup>	100 reactions	42-09112-0100
Mentype® Argus Y-MH <sup>QS</sup>	400 reactions	42-09112-0400

Bio **type**®

Biotype Diagnostic GmbH

Moritzburger Weg 67  
 D-01109 Dresden

Fon +49 351.8838 400  
 Fax +49 351.8838 403

info@biotype.de  
 www.biotype.de

04/2010